

Bio-Metric Device – Digital Persona Finger Print Reader

Driver Installation Instructions

Step 1:

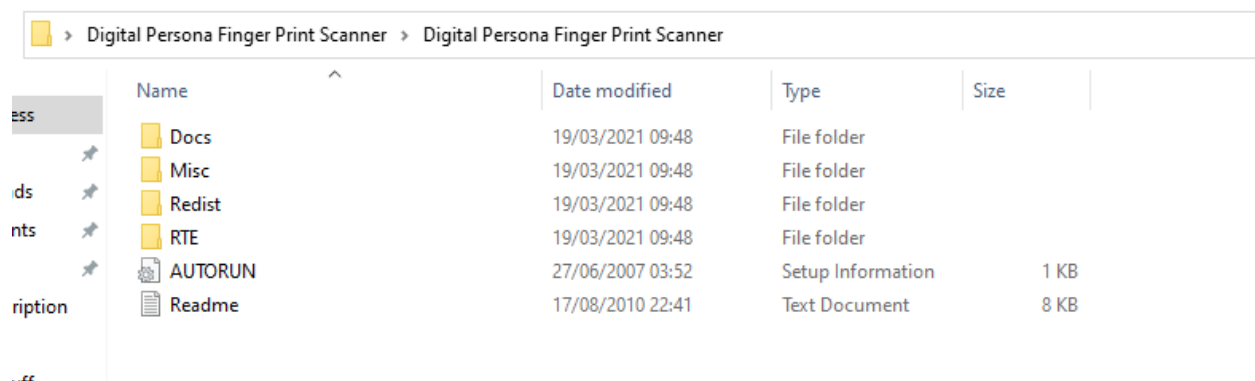
Download Drivers for Digital Persona Finger Print Reader Device from following link: https://gmfp.wapda.gov.pk/Downloads/Digital_Persona_Driver.rar

Step 2:

Extract Downloaded file “Digital_Persona_Driver.rar” using WinRAR Software.

Step 3:

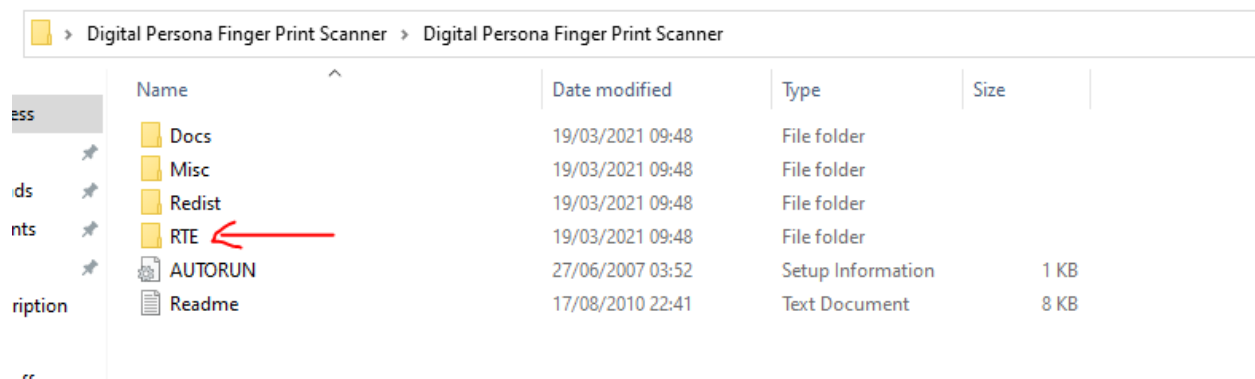
Open extracted folder it should look like following:



Name	Date modified	Type	Size
Docs	19/03/2021 09:48	File folder	
Misc	19/03/2021 09:48	File folder	
Redist	19/03/2021 09:48	File folder	
RTE	19/03/2021 09:48	File folder	
AUTORUN	27/06/2007 03:52	Setup Information	1 KB
Readme	17/08/2010 22:41	Text Document	8 KB

Step 4:

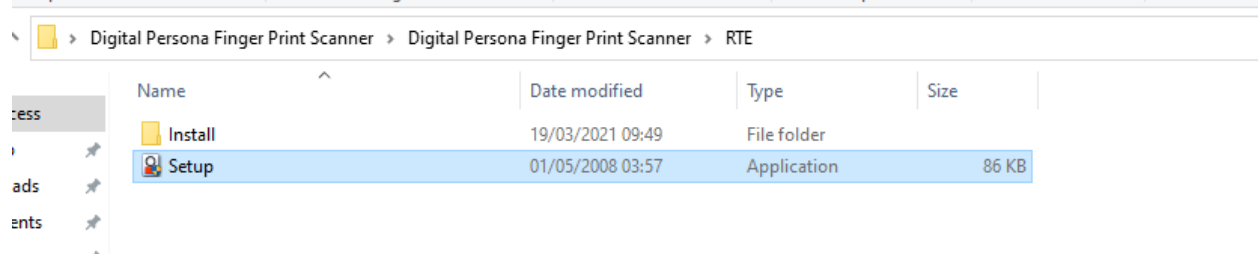
Go to folder “RTE” as shown below:



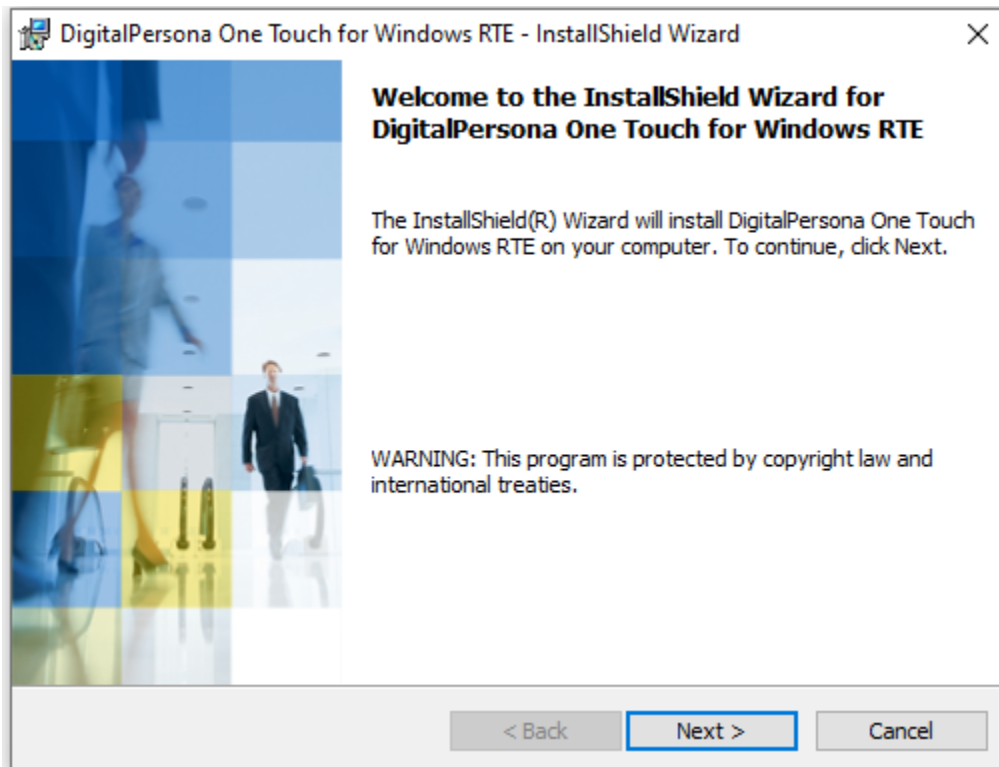
Name	Date modified	Type	Size
Docs	19/03/2021 09:48	File folder	
Misc	19/03/2021 09:48	File folder	
Redist	19/03/2021 09:48	File folder	
RTE	19/03/2021 09:48	File folder	
AUTORUN	27/06/2007 03:52	Setup Information	1 KB
Readme	17/08/2010 22:41	Text Document	8 KB

Step 5:

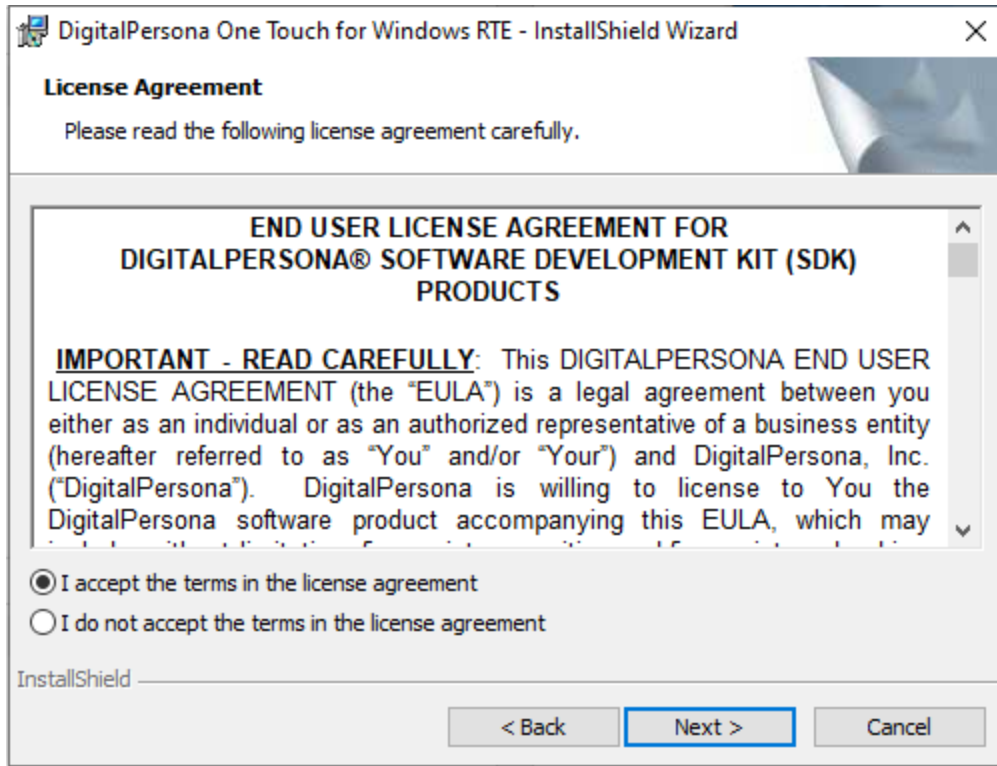
Inside “RTE” folder double click “Setup.exe” and proceed with installation of Drivers.



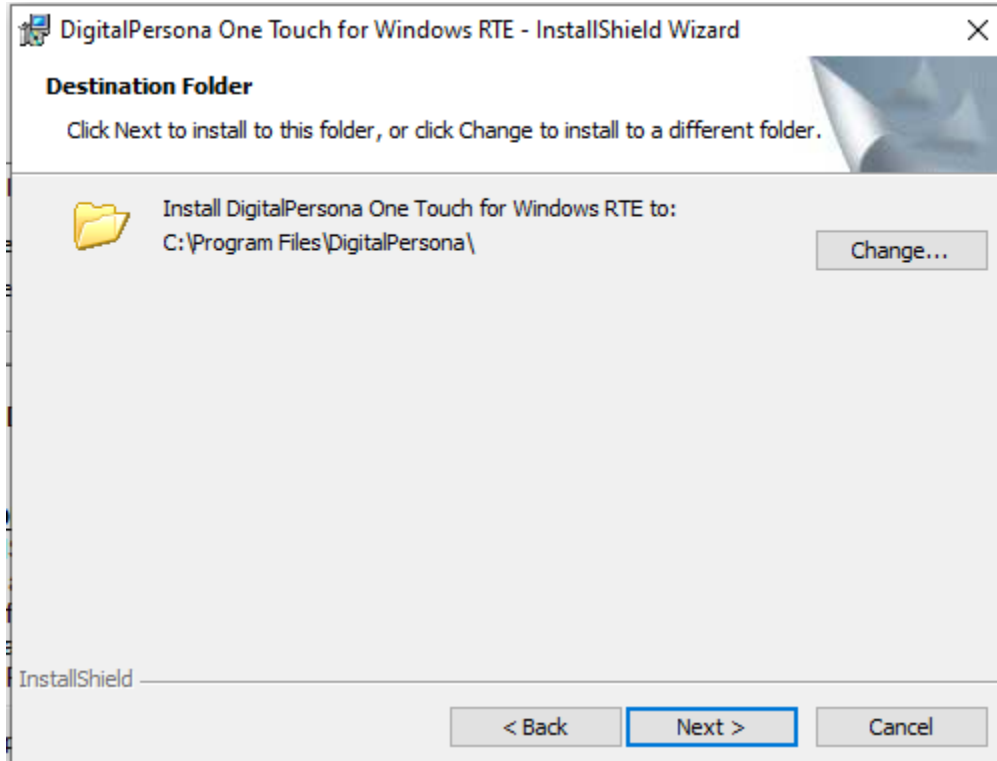
Once you run setup following installation screens will display, proceed by clicking “Next” and accepting terms and conditions.



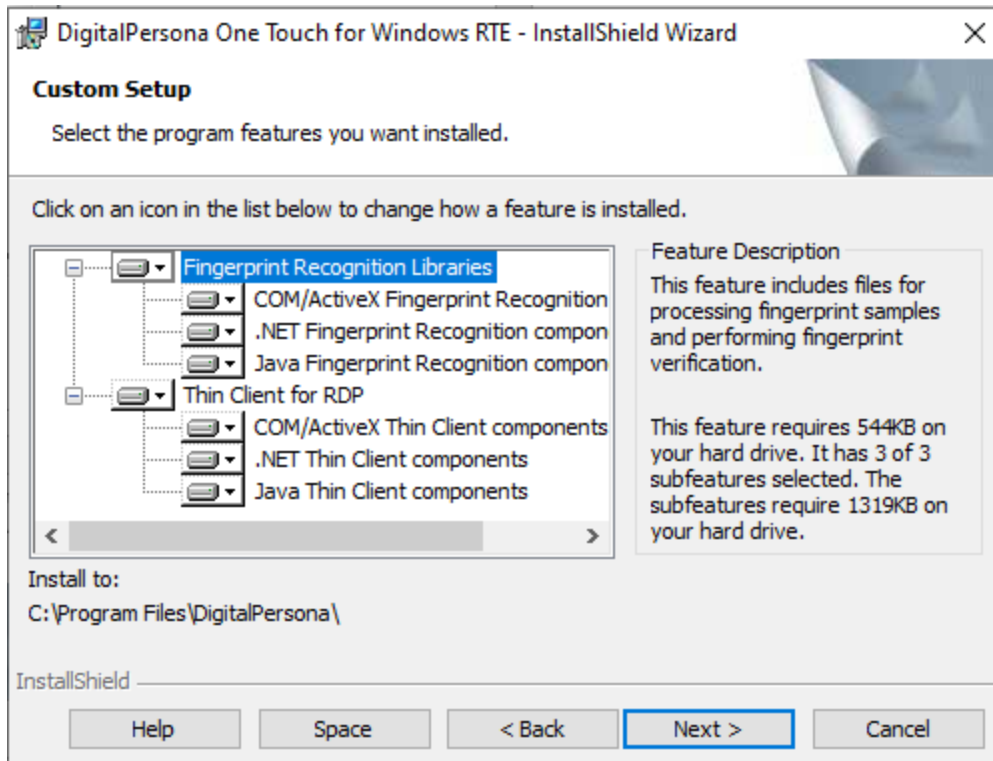
Click “Next” button



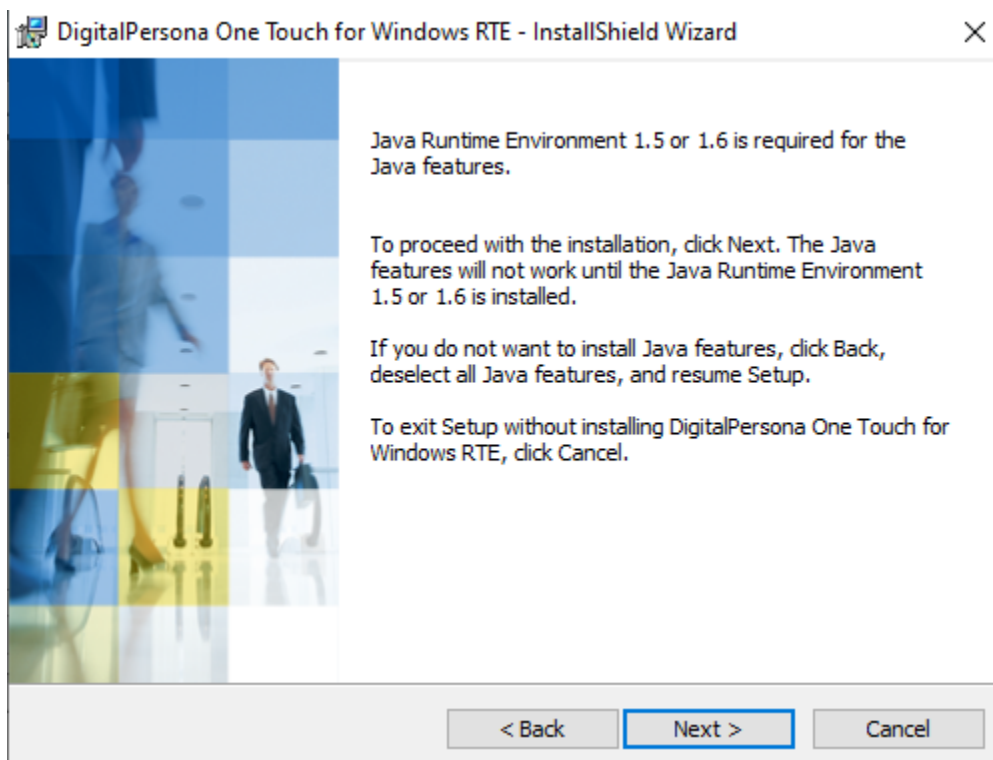
Click "I accept" and "Next" button



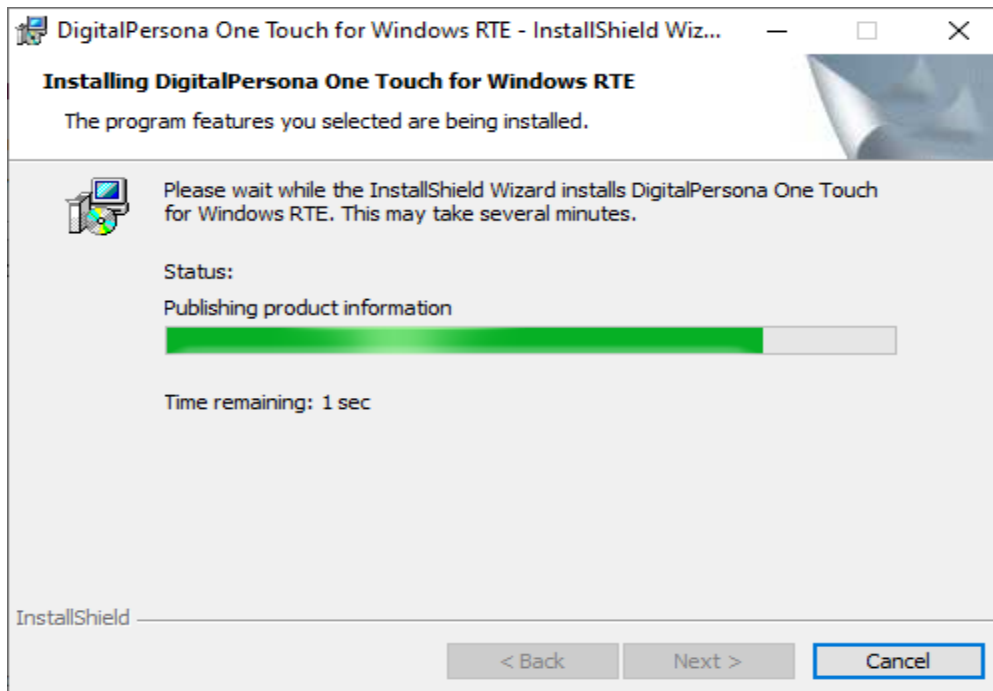
Click "Next" button



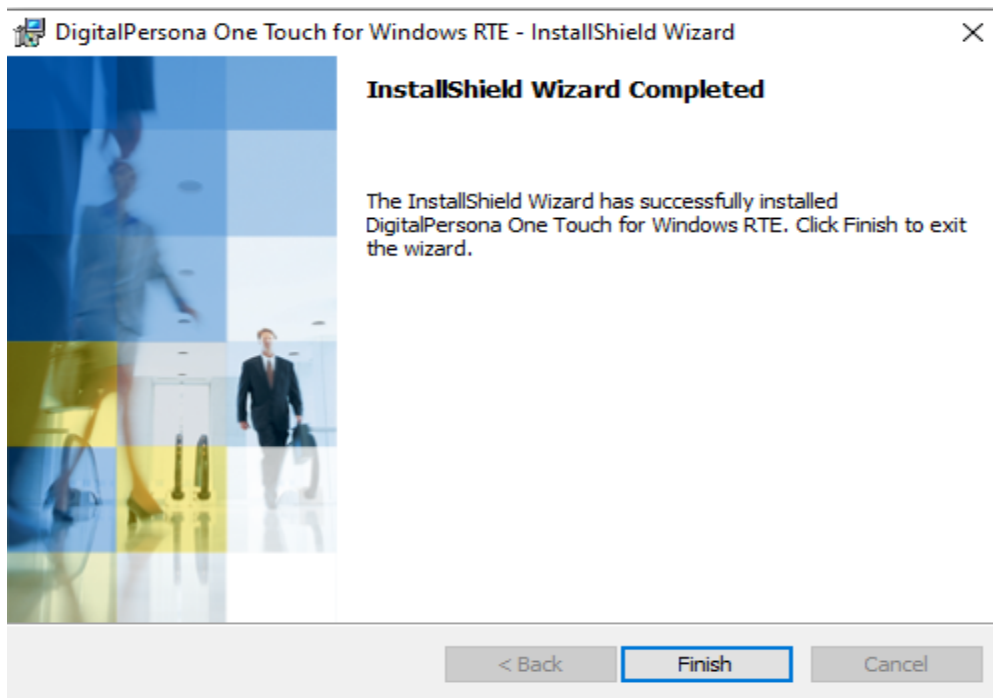
Click "Next" button



Click "Next" button



Installation will begin



Finished, congratulations you have successfully installed drivers.

THE END